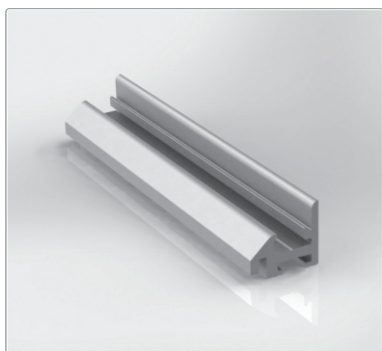
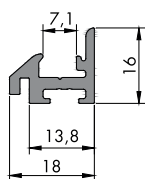


## WATERFALL

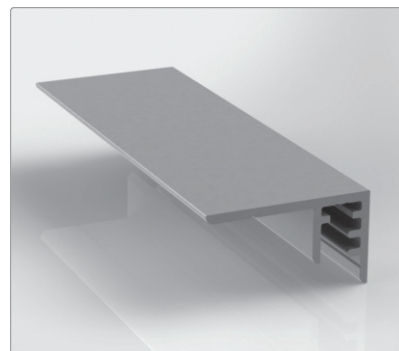
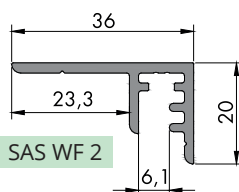
### ▪ PROFILE

SAS WF 1



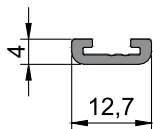
Profil inferior

SAS WF 2

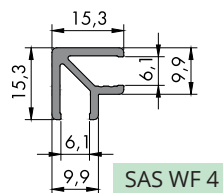


Profil superior pentru fixare pe corpurile suspendate

SAS WF 3



Profil lateral

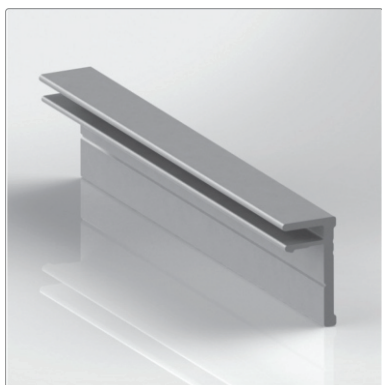
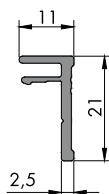


SAS WF 4

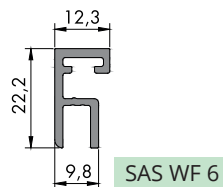


Profil îmbinare colț

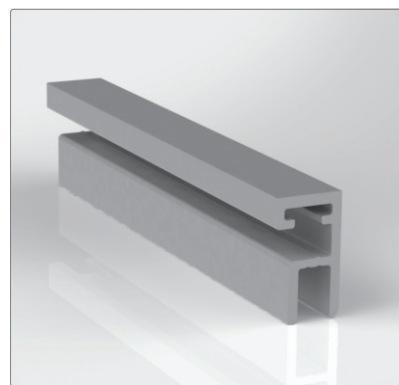
SAS WF 5



Profil prindere pentru fixare pe perete



SAS WF 6

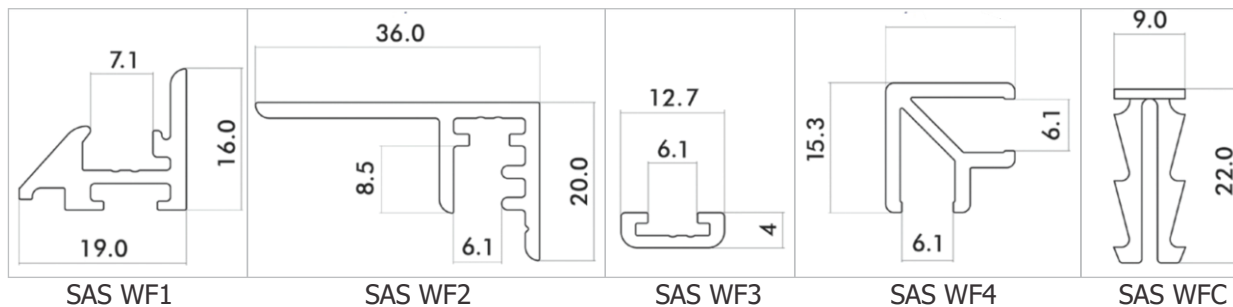


Profil pentru sticlă pentru fixare pe perete

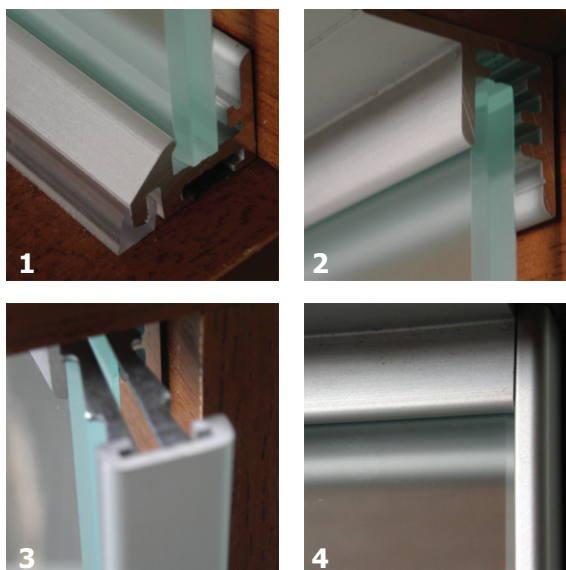
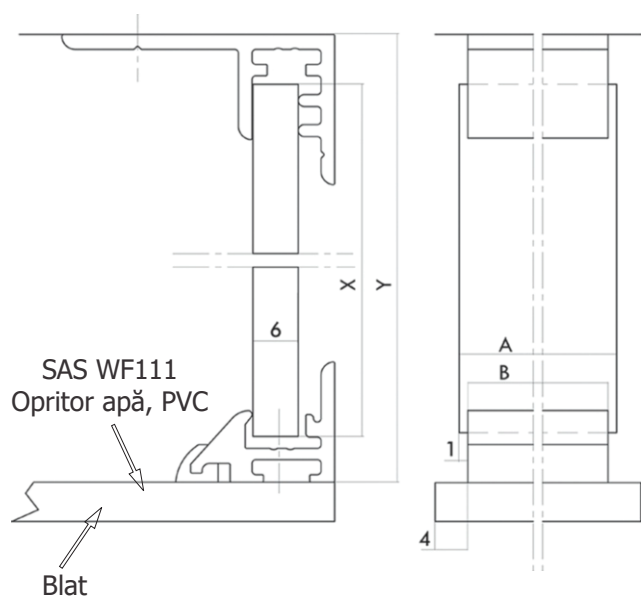


SAS WFC Clemă prindere

Prindere de corpurile superioare



Profilele SAS WF1 și SAS WF2 sunt fixate cu șuruburi de blat și de corpul suspendat.



SAS WF3 este fixat fie cu SAS WFC, fie cu silicon.  
Inlay-ul este fixat cu silicon pe SAS WF1.

$$X = Y - 14$$

X = înălțimea sticlei

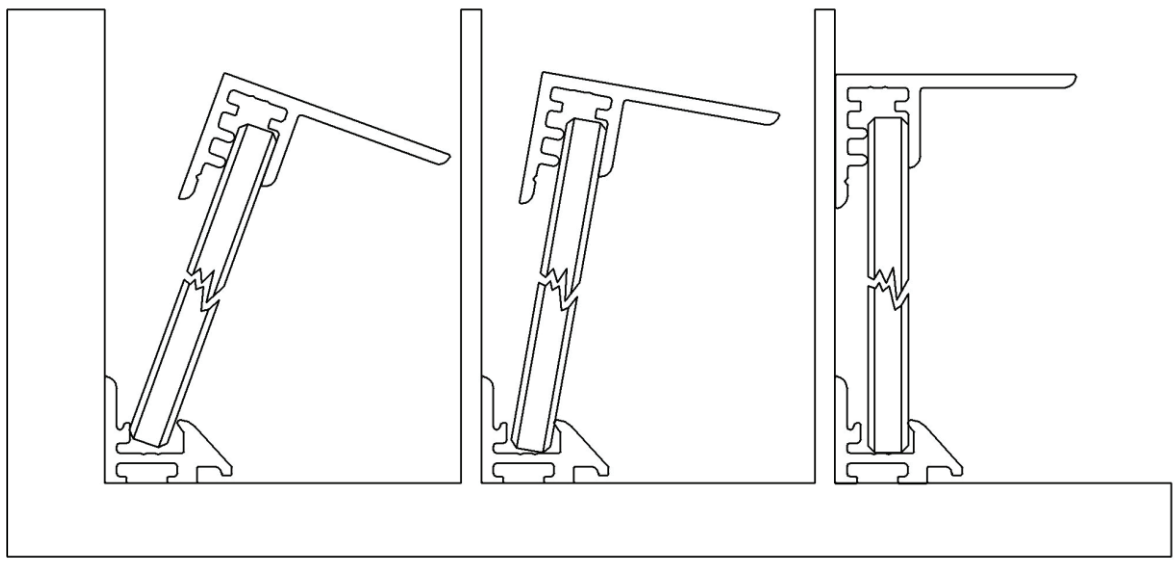
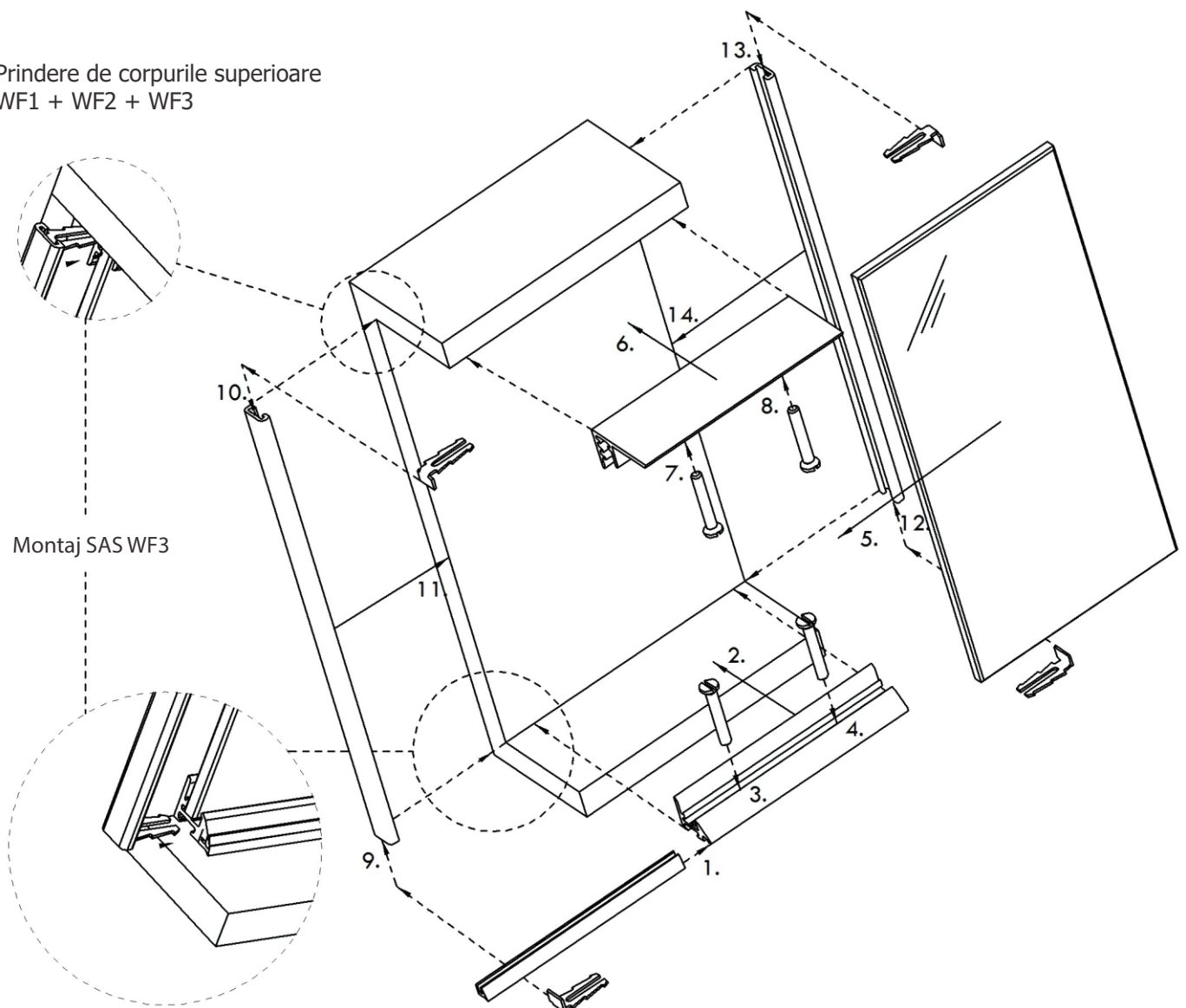
Y = înălțimea de deschidere

$$A = B + 2$$

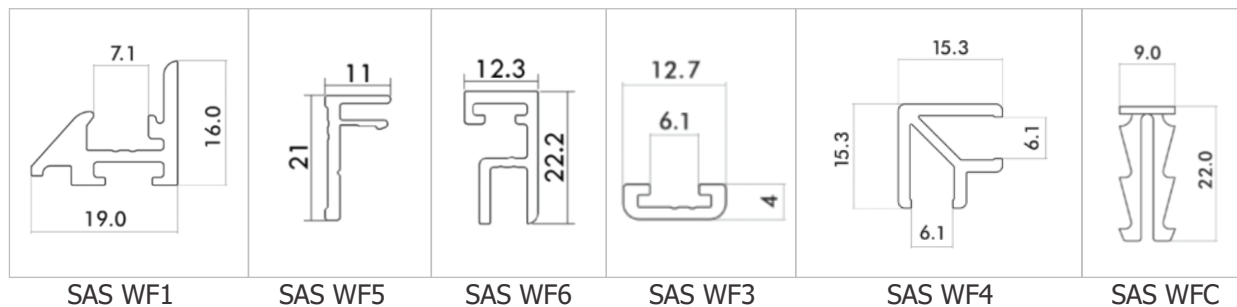
A = Lungime sticlă

B = Lungime profil SAS WF1

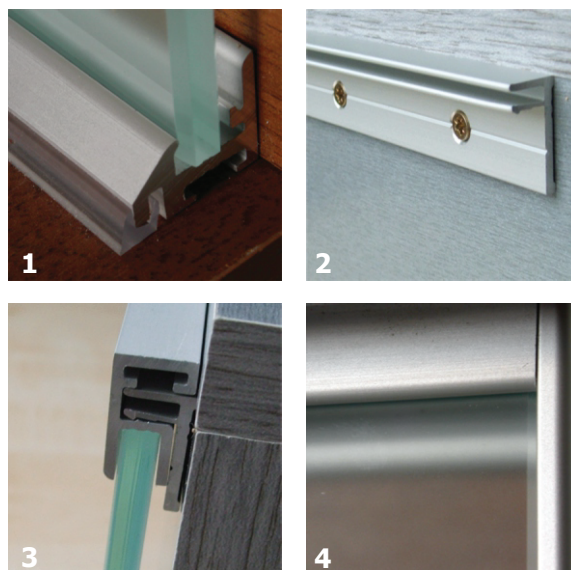
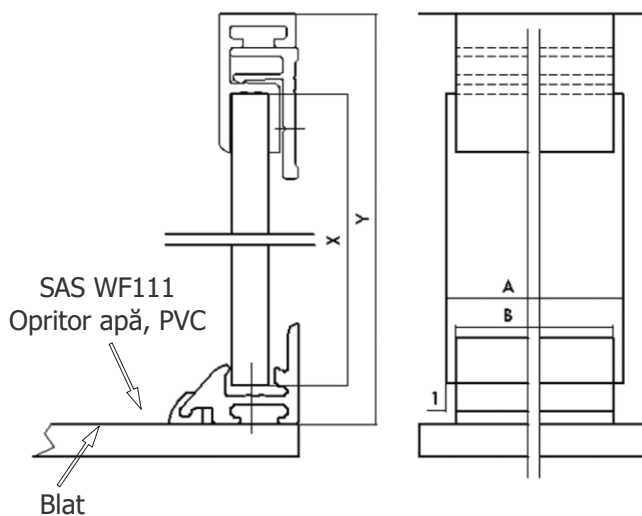
Prindere de corpurile superioare  
WF1 + WF2 + WF3



Prindere pe perete



Profilul SAS WF1 se fixează pe blat, iar profilul SAS WF5 se fixează cu șuruburi pe perete.  
 Profilul SAS WF6 cu sticlă se clipsează pe SAS WF5.



SAS WF3 este fixat fie cu SAS WFC, fie cu silicon.  
 Inlay-ul este fixat cu silicon pe SAS WF1.

$$X = Y - 20$$

X = înălțimea sticlei

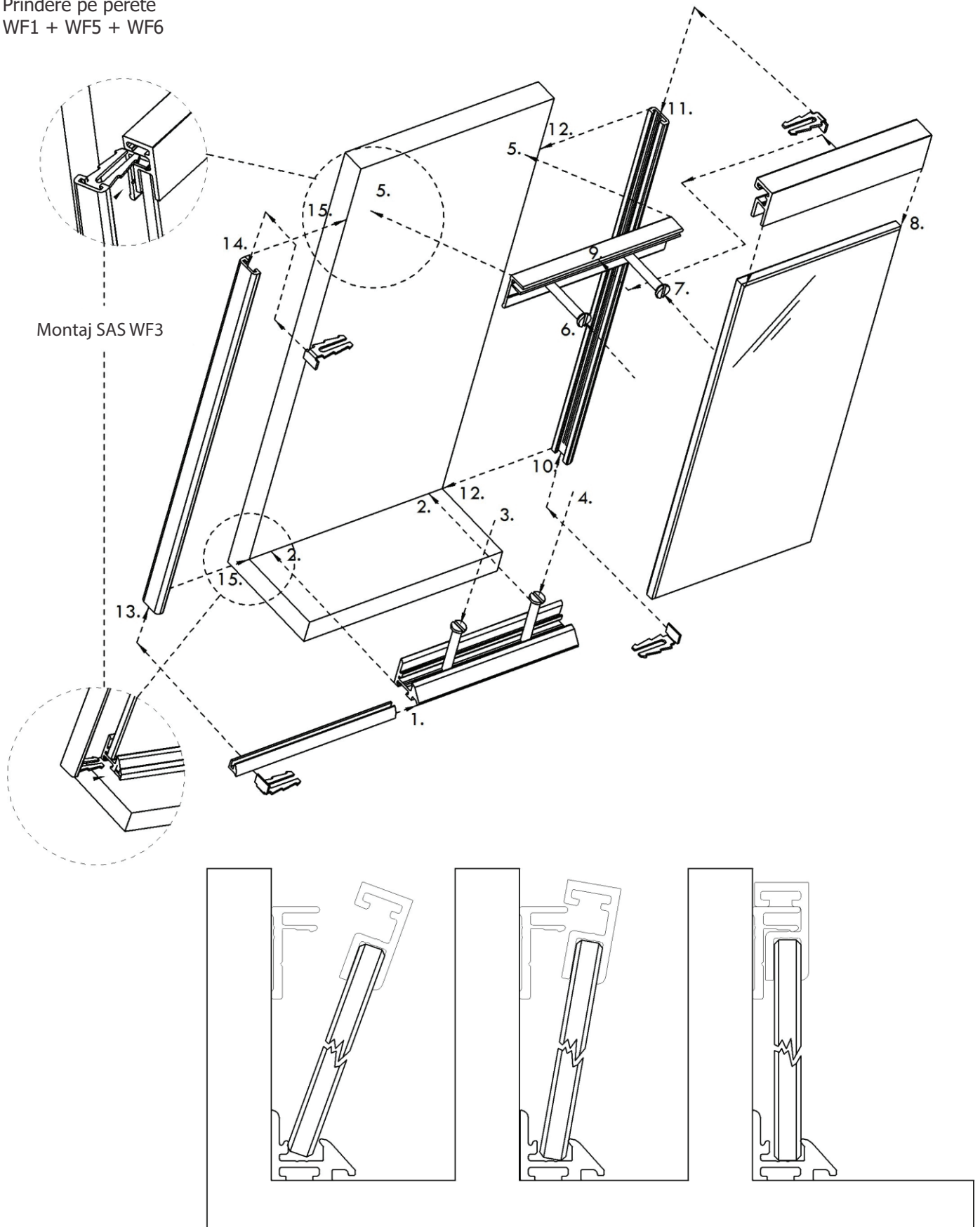
Y = înălțimea de deschidere

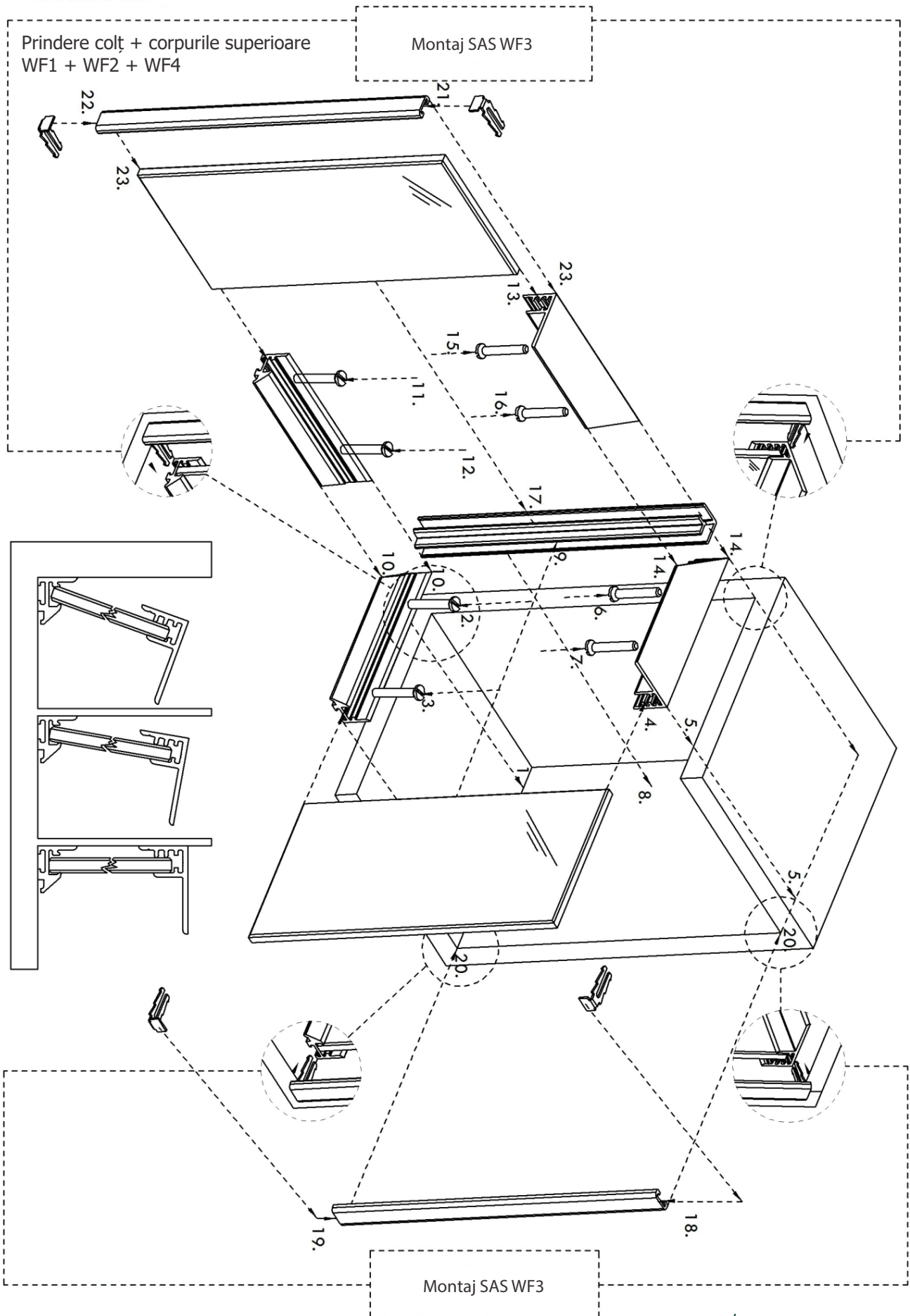
$$A = B + 2$$

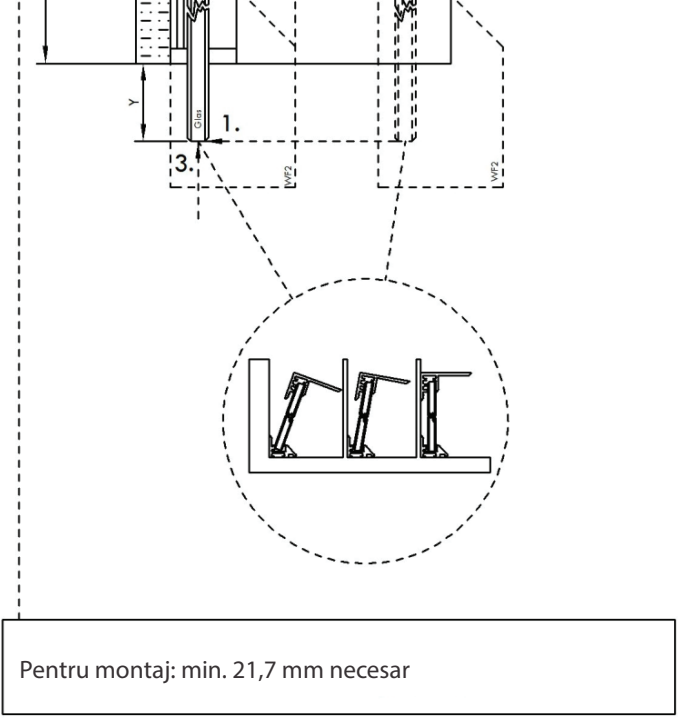
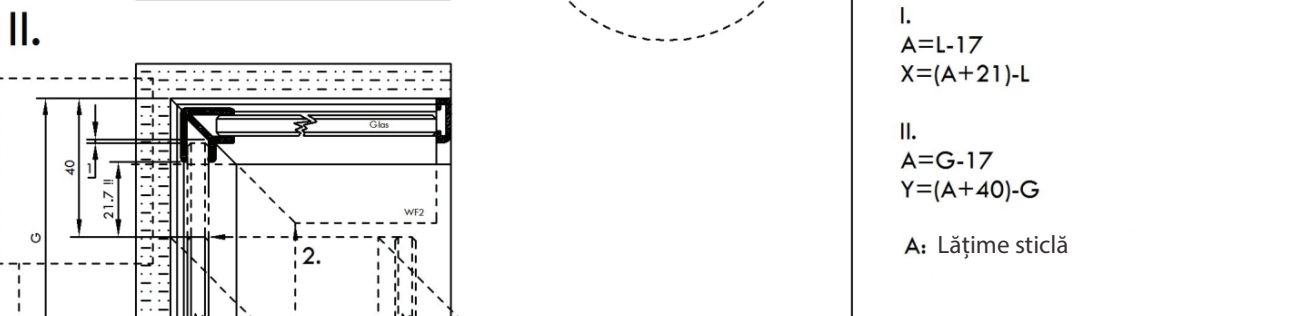
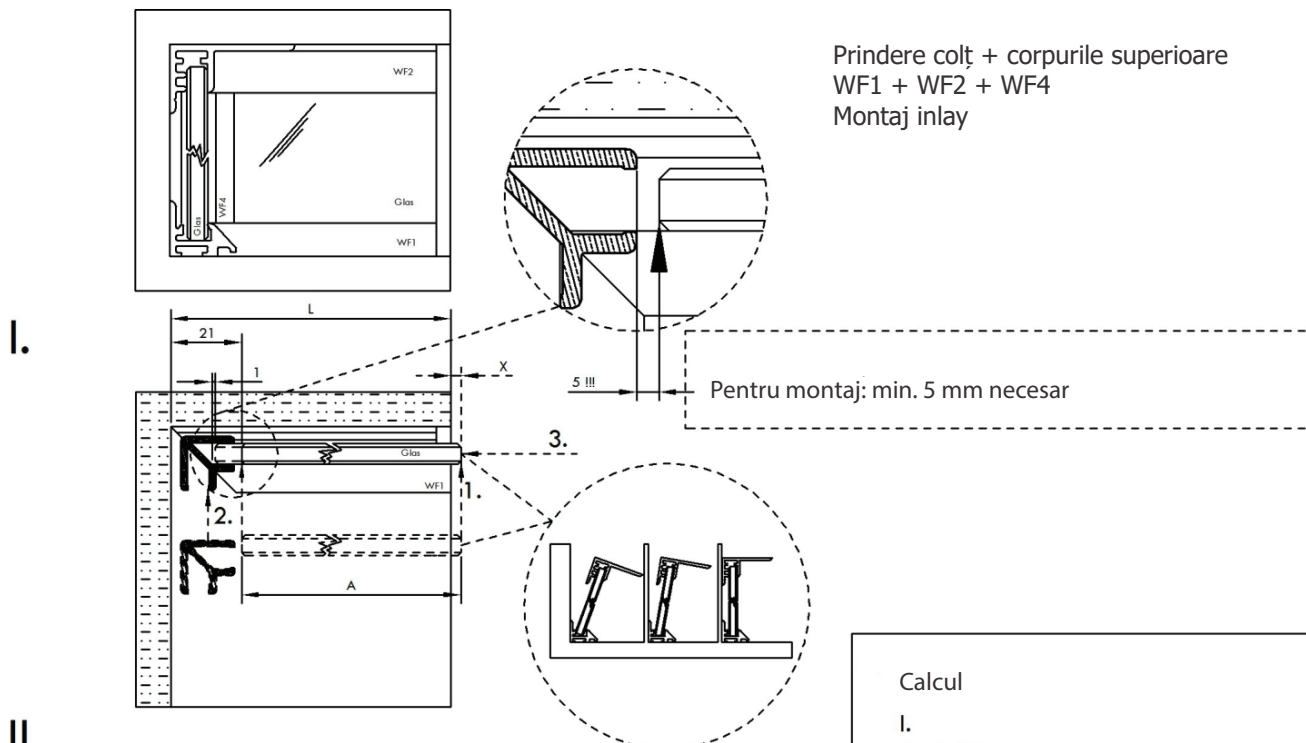
A = Lungime sticlă

B = Lungime profil SAS WF1

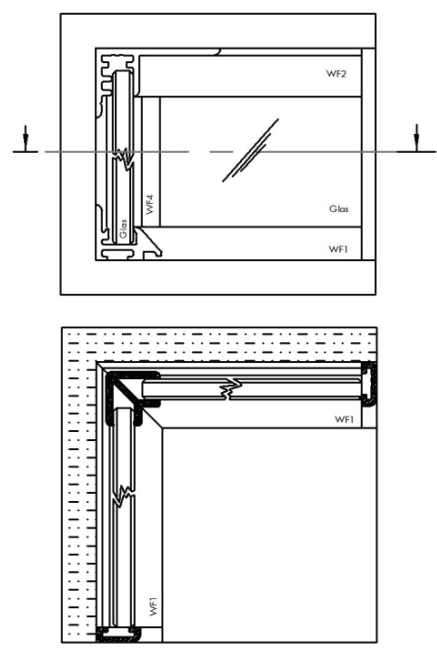
Prindere pe perete  
WF1 + WF5 + WF6







Sistem Waterfall montat



Prindere colț + perete  
WF1 + WF5 + WF6 + WF4

